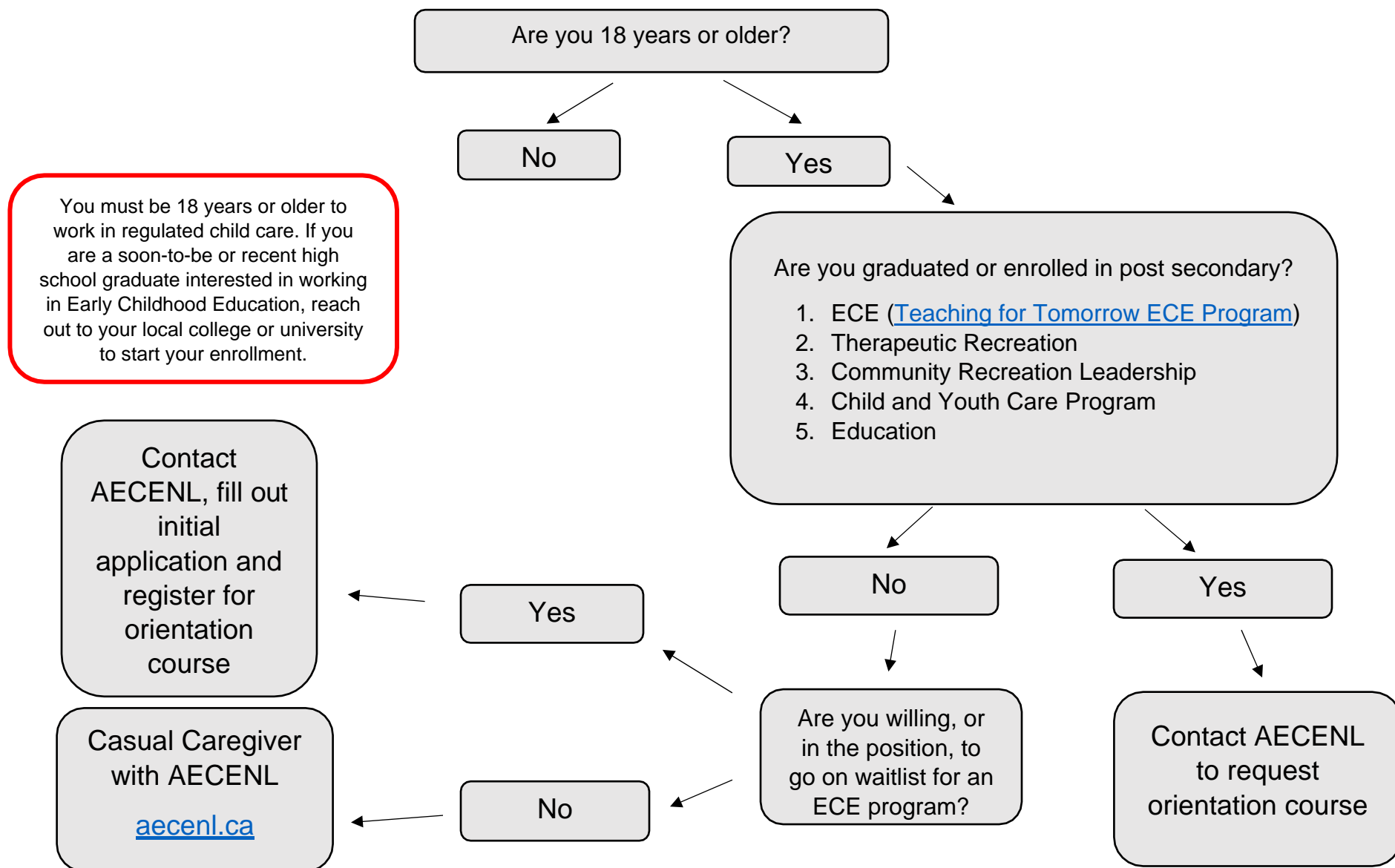




## Do you want to work in Child Care?





## Have you completed post secondary education?

You must be 18 years or older to work in regulated child care. If you are a soon-to-be or recent high school graduate interested in working in Early Childhood Education, reach out to your local college or university to start your enrollment.

ECE  
Certificate – Level 1  
Diploma – Level 2



Contact AECENL  
for certificate

Community Recreation Leadership  
Education Degree  
Child and Youth Care Worker



School Age



Contact AECENL



Apply for School  
Aged Child Care  
Orientation